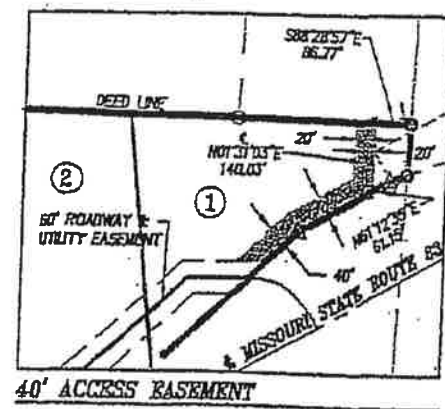


EXISTING STONE - DELIBERATELY,  
EAST ONE-QUARTER CORNER,  
SECTION 26, T39N, R23E,  
-REFERENCED BY MO PLS 1417, IN  
SURVEY FOR THE HARRY S TRUMAN  
BOUNDARY SURVEY, CONTRACT NO.  
DACW 41-79-C-0100, PREPARED BY  
WILLIAMS & MORRIS, DATED 01/07/1981.

FOUND STD. U.S.C.E. MONUMENT,  
2.00' SOUTH OF 1/4 SECTION CORNER,  
REFERENCE MONUMENT TO EAST  
ONE-QUARTER CORNER,  
SECTION 26, T39N, R23E,  
-REFERENCED BY MO PLS 1417, IN  
SURVEY FOR THE HARRY S TRUMAN  
BOUNDARY SURVEY, CONTRACT NO.  
DACW 41-79-C-0100, PREPARED BY  
WILLIAMS & MORRIS, DATED 01/07/1981.



40' ACCESS EASEMENT

**LEGEND:**

- ⊙ SECTION CORNER (AS NOTED)
- AP STD. U.S.C.E. ANGLE POINT MONUMENT (AP)
- POL STD. U.S.C.E. POINT-ON-LINE MONUMENT (POL)
- △ FOUND STEEL R/W MARKER
- ⊕ FOUND 1/2" IRON BAR (AS NOTED)
- ⊗ SET IRON BAR / CAP (LC 311)
- R/W RIGHT-OF-WAY
- U.S.C.E. U.S. ARMY CORPS. OF ENGINEERS
- (M) MEASURED
- (P) PLATTED
- ⊂ CENTERLINE